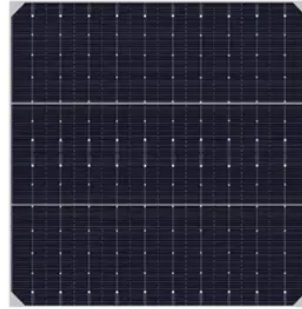




Comparison of 100kW smart pv-ess integrated cabinet products



Overview

This ESS Buyer's Guide is a comprehensive list of what each brand is offering in the residential and C&I space heading into 2026. We sent a questionnaire to every manufacturer to ascertain their top product and what components are included. Is it a hybrid inverter with a roster of. Energy Storage System Products List covers all Smart String ESS products, including LUNA2000, STS-6000K, JUPITER-9000K, Management System and other accessories product series. Designed to support grid-tied and off-grid scenarios, the Hybrid ESS cabinet offers seamless integration and maximized space utilization, making it an ideal choice for growing energy. The iCON 100kW 215kWh Battery Storage System is a fully integrated, on or off grid battery solution that has liquid cooled battery storage (215kWh), inverter (100kW), temperature control and fire safety system all housed within a single outdoor rated IP55 cabinet. This industrial and commercial. AZE's All-In-One C&I ESS Cabinet represents the cutting edge in industrial energy storage technology. Ideal for medium-scale C&I applications. The UE All-in-One 100-125kW / 215-233kWh Energy Storage System is a fully integrated commercial and industrial ESS cabinet designed to deliver reliable, safe, and intelligent energy storage. Liquid cooled outdoor 215KWH 100KW lithium battery energy storage system cabinet is an energy storage device based on lithium-ion batteries, which uses lithium-ion batteries as energy storage components inside. It has the characteristics of high energy density, high charging and discharging power.

Article Content

[HUA POWER C & I BESS Cabinet - 100kW/215kWh PV + Battery ...](#)

The HUA POWER 100kW/215kWh PV + Battery ESS All-in-One Cabinet is built for high-demand utility and industrial applications. With 100kW PCS and 215kWh of LiFePO₄ battery storage, it delivers ...

[Commercial and Industrial Energy Storage Cabinet ...](#)

Details of 100KW 215KWH Outdoor Cabinet Commercial and Industrial Energy Storage System All-in-One Design: Compact, pre-assembled solution for easy ...

[100kW 215kWh All-in-One Battery Storage Cabinet](#)

The iCON 100kW 215kWh Battery Storage System is a fully integrated, on or off grid battery solution that has liquid cooled battery storage (215kWh), inverter (100kW), temperature ...

[Energy Storage System Products List | HUAWEI Smart PV Global](#)

Energy Storage System Products List covers all Smart String ESS products, including LUNA2000, STS-6000K, JUPITER-9000K, Management System and other accessories product series.

[UE All-in-One 102kWh Outdoor Integrated ESS Cabinet](#)

The UE All-in-One 100–125kW / 215–233kWh Energy Storage System is a fully integrated commercial and industrial ESS cabinet designed to deliver reliable, safe, and intelligent energy storage solutions.

[100kWh Smart PV Ess Cabinet](#)

Integrated PV and storage system with super wide PV input voltage; Small footprint and IP54 protecting grade for outdoor installation. Safe & Reliable High-performance battery cell, meet IEC/UL/GB ...

[All-In-One C& I ESS Cabinet | 100kW/ 215kWh | AZE](#)

Introducing the All-In-One C& I ESS Cabinet - a high-performance, containerized energy storage system designed to deliver 100kW power output and 215kWh capacity in a single, integrated unit.

[Energy Storage System Buyer's Guide 2026 | Solar ...](#)

Energy storage systems (ESS) might all look the same in product photos, but there are many points of differentiation. What power, capacity, system smarts actually ...

[Building-integrated photovoltaics with energy storage systems - A ...](#)

Evolution of electrical and thermal performance of BIPVs with ESSs are reviewed. The BIPVs based on the different ESSs are studied. Economic considerations due to integrating the ...

SolaX ESS-AELIO | C&I Energy Storage ESS Cabinet

With support for 200% PV oversizing and a maximum 40A DC input current, the Hybrid ESS Cabinet ensures high throughput for large-scale solar integration. ...

Contact Us

For more information, pricing, or custom solutions, please contact us:

Website: <https://lup.edu.pl>

Email: info@lup.edu.pl

Phone: +48 512 478 936

Address: ul. Marszałkowska 10, 00-001 Warsaw, Poland

This document is for informational purposes only. Specifications subject to change without notice.

