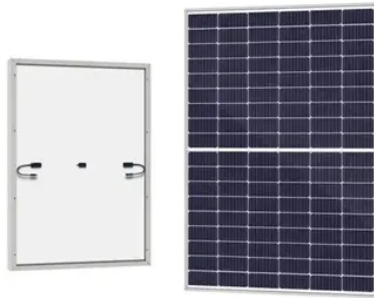




# Snail pattern on the back of photovoltaic panels



## Overview

A snail trail on a solar panel is a visible sign of underlying stress, usually linked to micro-cracks, moisture, or material degradation. Have little or no warranty coverage. Carry. This unsettling phenomenon called snail patterns affects solar modules worldwide, silently undermining solar investments. Research shows snail trails frequently indicate deeper issues in photovoltaic systems that could slash your energy. Seeing unusual dark, winding lines—often called 'snail trails'—on your solar panels can be a bit unsettling. These dark or brown streaks typically form near busbars, along panel edges, or near microcracks. Contrary to what the name might suggest, these trails have nothing to do with actual snails. Instead, they refer to a series of visible lines or patterns that can appear on the. Solar panels can develop "snail trails"—silvery, brown slivery patterns inside the panel - under the glass not caused by actual snails but indicative of potential issues in the modules.



## Article Content

### Snail Trails on The Solar Panels

Snail trails, also referred to as snail tracks or worm marks, manifest as localized discoloration lines that develop on solar panels over extended ...

### Mechanism and suppression of snail patterns on solar panels

These mysterious markings aren't just cosmetic flaws. Research shows snail trails frequently indicate deeper issues in photovoltaic systems that could slash your energy generation by ...

### Snail Trails - PV-Manufacturing

Snail Trail (also known as snail tracks or worm marks) have been observed in outdoor conditions, which appears as brownish discoloured contact fingers ...

### What Are Snail Trails On Solar Panels And How To Fix ...

These dark or brown streaks typically form near busbars, along panel edges, or near microcracks. Understanding what causes snail trails, their impact ...

### Snail Trails on Solar Panels: A Guide to Their Hidden Origins ...

A snail trail, known in the industry as snail track discoloration, is the visible result of a chemical reaction. It's a browning of the silver gridlines on a solar cell's surface, and it always follows the path of a pre ...

### What Causes Snail Trails on Solar Panels?

Solar panels can develop "snail trails"—silvery, brown silvery patterns inside the panel - under the glass not caused by actual snails but indicative of potential ...

### Snail Trails on Solar Panels: Everything You Need to Know

Snail trails on solar panels are faint, dark lines caused by microcracks and chemical reactions, reducing efficiency by up to 40% and affecting lifespan.

### Snail Trail on Solar Panels: What It Means and Why It Matters

Learn what snail trails on solar panels mean, why they happen, and how they affect performance. Understand risks, safety, and buying used panels with snail trails.

### Snail Trails on Solar Panels: What They Mean & How ...

Got ugly snail trails on your solar panels? Learn their true impact on performance and lifespan, plus smart ways to fix this common issue. Find out ...

### How to Deal With Snail Trails on Solar Panels!

To deal with snail trails on solar panels, regularly clean the panels, apply protective coatings, and invest in high-quality panels from reputable ...

## Contact Us

For more information, pricing, or custom solutions, please contact us:

Website: <https://lup.edu.pl>

Email: [info@lup.edu.pl](mailto:info@lup.edu.pl)

Phone: +48 512 478 936

Address: ul. Marszałkowska 10, 00-001 Warsaw, Poland

This document is for informational purposes only. Specifications subject to change without notice.

